

Welcome to Eminence

This relaxed community resembles the area's other small farm and mining towns—except for the canoes and paddling gear that seem to be stacked in every corner. The town steps up a bluff along the south bank of the Jacks Fork River, which flows into the Current a few miles east. Springs feed both of these clear, pristine streams.

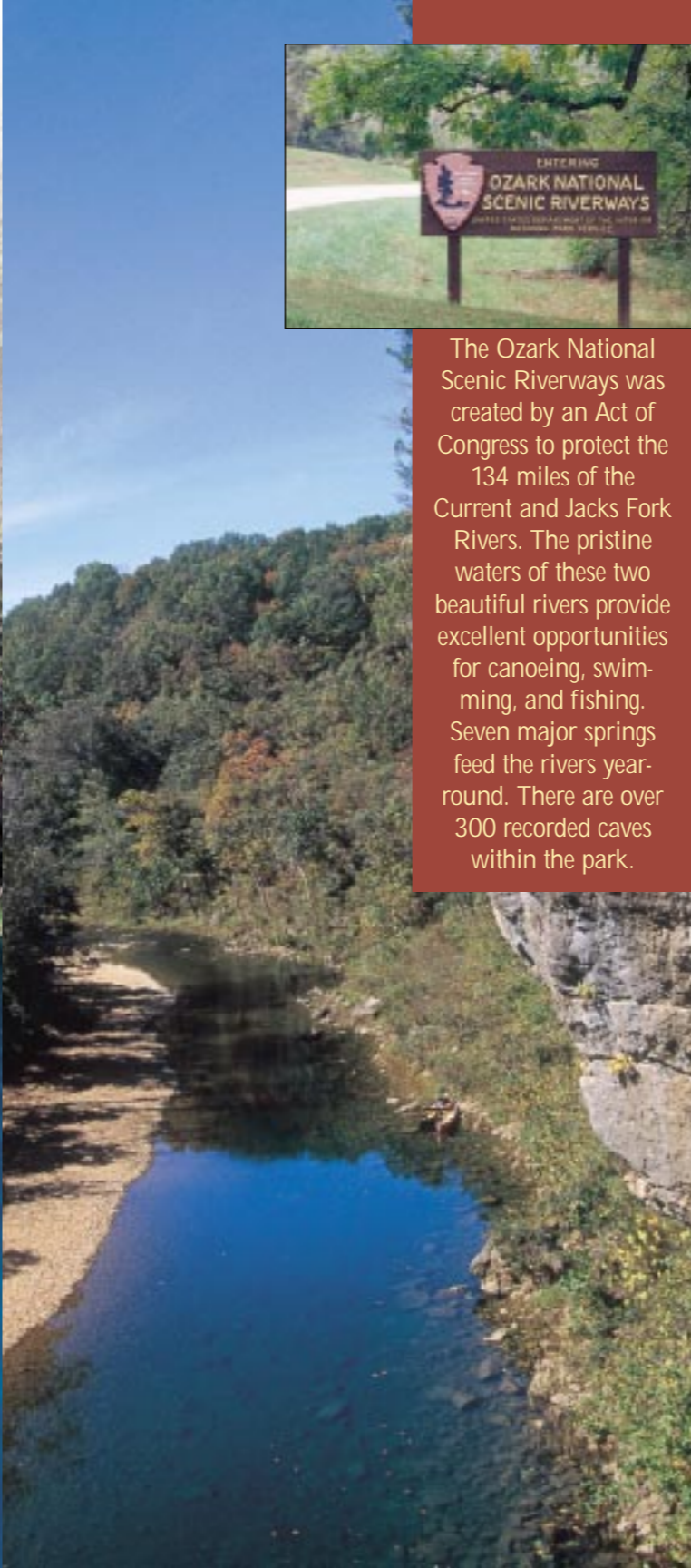
The two rivers form the 140-mile-long Ozark National Scenic Riverways, which teems with float-trippers. Visitors can rent canoes from outfitters. Limestone bluffs rise 100 feet above the easy course. You also pass flower-laced meadows, where you might spot deer.

Alley Spring National Park Site

Beneath a coat of red paint, century-old Alley Spring flour mill rises serenely through dense hardwoods above the blue-and-jade colored waters of a pond that's filled by a natural spring. You can tour the mill Memorial Day through Labor Day. Exhibits

and photos reveal the history of this Ozark landmark.

Jacks Fork River near Alley Mill



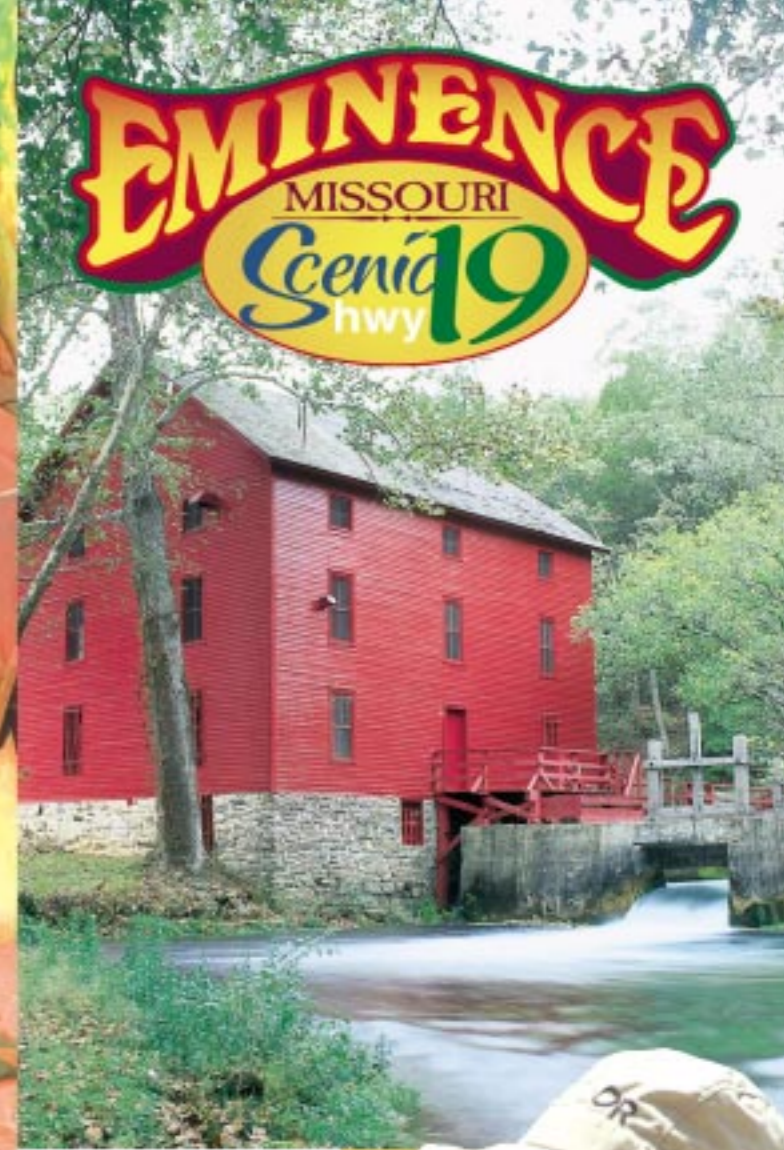
The Ozark National Scenic Riverways was created by an Act of Congress to protect the 134 miles of the Current and Jacks Fork Rivers. The pristine waters of these two beautiful rivers provide excellent opportunities for canoeing, swimming, and fishing. Seven major springs feed the rivers year-round. There are over 300 recorded caves within the park.



Post Office Box ???
Eminence, Missouri ????

(573) 226-3318

www.eminencemo.com



Visitor's Guide

Eminence, Missouri & other area attractions

www.eminencemo.com



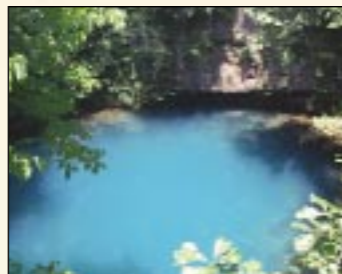
Explore Shannon County

and the Ozark National Scenic Riverways

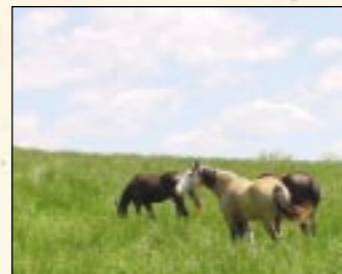
Located along the banks of the Jacks Fork River and one of America's most scenic highways, Shannon County has been a special destination of world travelers for more than 100 years.



Hike along the Ozark Trail and Lick Log Nature Trail.



Round Spring - deep aquamarine blue water flows from a circular collapsed cavern into the Current River.



A chance sighting of the wild horses is a thrill to see. They are federally protected by the Wild Horse League, located in Eminence.



Rocky Falls - one of the area's best kept secrets. Water flowing over lava rocks makes for a spectacular sight with a great swimming hole.



Watch bluegrass and local folk performers

Natural beauty at its finest is exemplified in our many springs, caves, abundant wildlife, and especially our pristine streams. The Canoe Capital of the World invites you to float year-round on the Jacks Fork and Current Rivers for a few hours or a few days for a truly memorable experience.

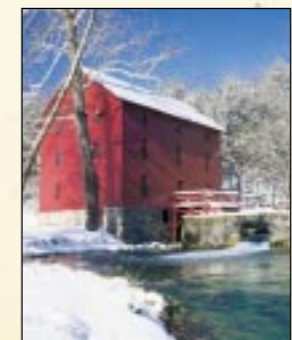
So get away from it all and come relax with us in the unspoiled beauty of the Ozarks. Let our friendly folks show you and your family and friends real Ozark hospitality.

Regional Sightseeing

You'll also want to visit Big Spring, the world's largest single outlet spring. Pulltite Spring is a beautiful spot you can access by canoe on the Current River. The Pulltite to Round Spring float is one of the most popular among canoeists. Also, Akers Ferry is a tourist favorite. This scenic drive takes you to one of the last river ferries of this type in operation. The Current River is the nation's number one float stream. Devil's Well and Devil's Backbone are also in the area. The Ozark Trail, which parallels the Current River and the Lick Log Nature Trail will delight hikers.



Trophy whitetail deer are abundant throughout the area.



Alley Mill is a spectacular site year-round



Explore scenic Highway 19



Blue Spring - Missouri's sixth largest spring. The native American name for the spring is "The Spring of the Summer Sky" because of its clear blue color.



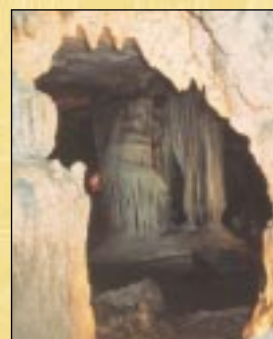
Many deep pools along the river bluffs make for great swimming.



Two Rivers - the confluence of the Jacks Fork and Current Rivers. Both rivers are under the protection of the national park service.



See majestic Bald Eagles along the river bluffs.



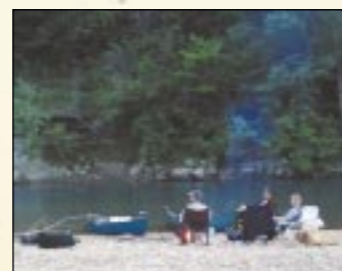
Visit Round Spring Caverns and enjoy a cave lantern tour



Canoe, kayak or tube the Jacks Fork and Current Rivers. Many outfitters are available to assist you with your adventure.



Horseback riding is a favorite pastime of many visitors. You may rent or bring your own for a guided trip.



Canoe and camp along the many river gravel bars.



"Tubing" is a great way to slowly enjoy the scenic beauty of the rivers.

Visit us now and take a step back into the past. The city of Eminence is listed on the National Register of Historic Districts. The original location of Eminence, located at Round Springs, was destroyed in the Civil War. Later the town was rebuilt at its present location.

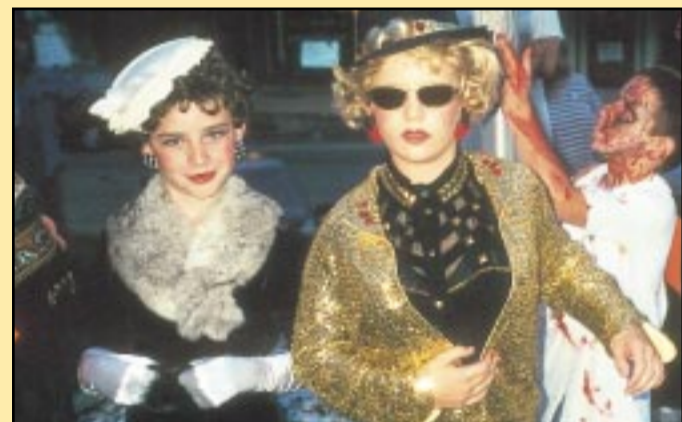
Come and enjoy the friendly people, the town's peaceful atmosphere, and the many recreational opportunities. We invite you to share this truly special place with us where life is simple, the mountains are inspiring and the people care.



Arts and Crafts



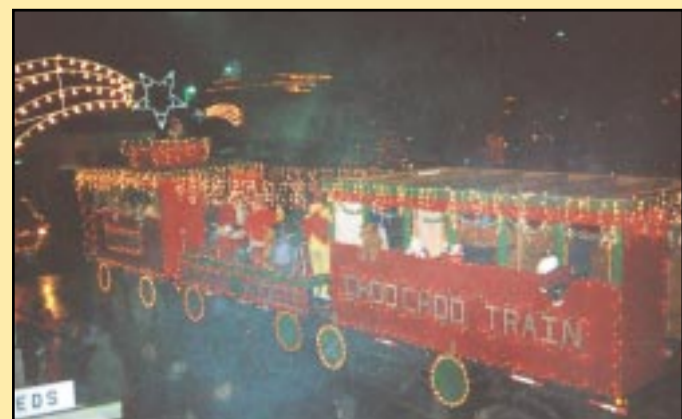
Golfing



Halloween



Veterans Parade



Christmas Parade

Contact the Eminence Chamber of Commerce for information on annual events
(573) 226-3318

Dining

- 1 Dairy Shack** – Quality food cooked to order at a great value in a unique walk-up venue. Featuring traditional fare, lunch specials, low calorie selections and a vast array of cool desserts. Located on Main Street in Eminence, MO. 573-226-3727.
- 2 Ozark Orchard Restaurant** – Dining at its best in the heart of Eminence. Featuring choice beef. Beer and mixed drinks available. Enjoy our deck overlooking Main Street. Weekend all-you-can-eat buffets. Phone 573-226-3604.
- 3 Ruby's Family Restaurant** – 573-226-3878. Full menu. Friday's special all-you-can-eat catfish and shrimp buffet with grilled catfish. Hours: Monday-Thursday 7 am-8 pm, Friday & Saturday 7 am-9 pm, Sunday 7 am-2 pm.
- 4 Tim's Fast Stop** – Gas, pizza, beer, camping supplies, ice, deli, swimming gear. Open late for your convenience.
- 5 Winfield's Restaurant and General Store** – Turn of the century soda fountain, Saint Louis style pizza, stately dining room, rest and relax at Rube's Roost. Faulkenberry's Antique Auction coming soon.

Lodging

- 6 Aguila Lodge/RS Steakhouse** – Elegant dining and lodging overlooking the beautiful Jacks Fork River. Rustic club with full size bar and game room. Contact us at 573-226-5665 or email us aguila@semo.net or www.eminencelodge.com
- 7 Cedar Stone Country** – Lodging in country setting, romantic getaways, family vacations, reunions, business meetings, conferences, retreats. Highway 19 South, Eminence, MO 65466. Phone 573-226-5656.
- 8 Hawkins House Bed & Breakfast** – Offers a suite or rooms with king or queen size bed, private baths and full breakfast for visitors seeking refuge and comfort away from home. Call 877-875-7050 or www.g-web.net/hawkinshaus
- 9 Homeport Inn Bed & Breakfast** – Experience an intimate, charming country inn, screened porch, pavilion, park and bonfire area; full breakfast, complimentary wine and sweet treats. Relax and be pampered! Located near Blue Spring and Current River. 573-663-7887.
- 10 Maple Tree Inn & Cottage** – 100 year old home boasts private entrance, private baths, TV, air, pool, and breakfast brought to your room. Two bedroom cottage sleeps 4 to 8, fully equipped kitchen. Junction Highway 19 & 106. Phone 573-226-3644. 1/4 mile from river. innkeeper1@socket.net
- 11 Old Blue House** – 100 year old home furnished with antiques, modern amenities. Free continental breakfast, country breakfast is extra. 301 South Main Street, PO Box 117. 573-226-3498. Email oldbluehouse-b@webtv.net www.missouri2000.net/oldbluehouse
- 12 Ozark Cabins** – PO Box 426, Eminence, MO. 573-226-5537 or cellular 417-331-4761. Located 6 miles east of Eminence, MO in the heart of the Ozark mountains. Self-guided scenic trips around the area.
- 13 Ozark Farm Bed & Breakfast** – Stay at an inn on an Ozark farm. A perfect get-a-way for relaxation. Each room has its own private entrance. Full breakfast, king or queen bed, private baths, VCR, jacuzzi, screen-in-porch. 573-226-3745. ozarkbb@socket.net
- 14 River's Edge Resort** – Offering the finest lodging on the Jacks Fork River in Eminence. Deluxe cabins with stone fireplaces and bath-spa. Rooms, suites, camper cabins, all overlooking the river. Virtual tour at www.rivers-edge.com or call 573-226-3233.
- 15 Riverside Motel Cabins/Beulah's Country Home** – Riverfront cabins, indoor heated pool, kitchens, non-smoking rooms, horse stalls, "new" secluded cabins with private horse stalls. 511 North Main Street. 573-226-3291. riverside-motel.com riverq@socket.net
- 16 Shady Lane Cabins and Motel** – Small and large cabins. Large cabins have kitchens, great for large groups. Motel rooms for only \$40.00. For reservations call 573-226-3893. www.shadyln@semo.net or www.shadylanecabins.com
- 17 Shawnee Creek Cottages, LLC** – Fully furnished, private cottages located on Shawnee Creek. Full kitchens, dish satellite, picnic tables, BBQ grills, and place for a creek-side campfire. Great for small groups. Open year-round. Check out our website. 573-226-5295.

Recreation

- 18 Akers Ferry Canoe Rental** – Canoes, cabins, camping, groceries, fun tubes, sightsee, hike, shuttles. Located on upper Current River at Akers Ferry. 573-858-3224 or 1-800-333-5628.
- 19 Arrowhead Campground** – On Jacks Fork riverbank. Cabins/tent camping, full RV hookups, electric, water, sewer, pull through sites, new shower house, hot water, lots of riverside camping. Call 573-226-5250 or 1-877-828-9954. Email arrowhead1@socket.net
- 20 Booger County Mini Golf and Arcade** – After a long day on the river, relax and have some fun. Our course has 18 holes that will challenge the whole family. We also have two 8 ball tables, air hockey, and many popular arcade games to keep you entertained. Located 1/8 mile north of the Jacks Fork Bridge on Highway 19 across the road from Riverside Motel. Owned and operated by Eugene and Leea Dodson.
- 21 Carr's Grocery & Canoe Rental** – Canoes, kayaks, river shuttles and group rates. Grocery, gas, camping and showers at park. Highway 19 at Current River Bridge. Call 800-333-3956 or visit us online at www.carrscanoerental.com
- 22 Coldwater Ranch** – Quality and comfort come together to provide remote luxury cabins. Hourly horse rides, pack trips, horse camping with water and electric, and large stalls. Open year-round! 573-226-3723 coldwater.com
- 23 Crystal Creek Ranch** – CrystalCreekRanch.com 573-226-2222. Self-guided ranch tours, farm primitives museum, horse drawn equipment, small animal area, walking trails, lookout deck, fee fishing, lodging, field trips, group or individual activities and retreats!
- 24 Current River Canoe Rental** – Canoe, kayak and tube rentals. Group rates, shuttles and riverfront camping. Located at Pulltite Campground on Highway EE off Highway 19. Call for reservations 800-435-5050. Visit us online at www.current-river.com
- 25 Discovery Ministries** – 573-226-3213, www.godiscoveryministries.org. Family camping in a Christian atmosphere (no alcohol allowed). Tents, RVs, lodging. Adventure activities include ropes courses, rock climbing/rappelling, canoeing and caving.

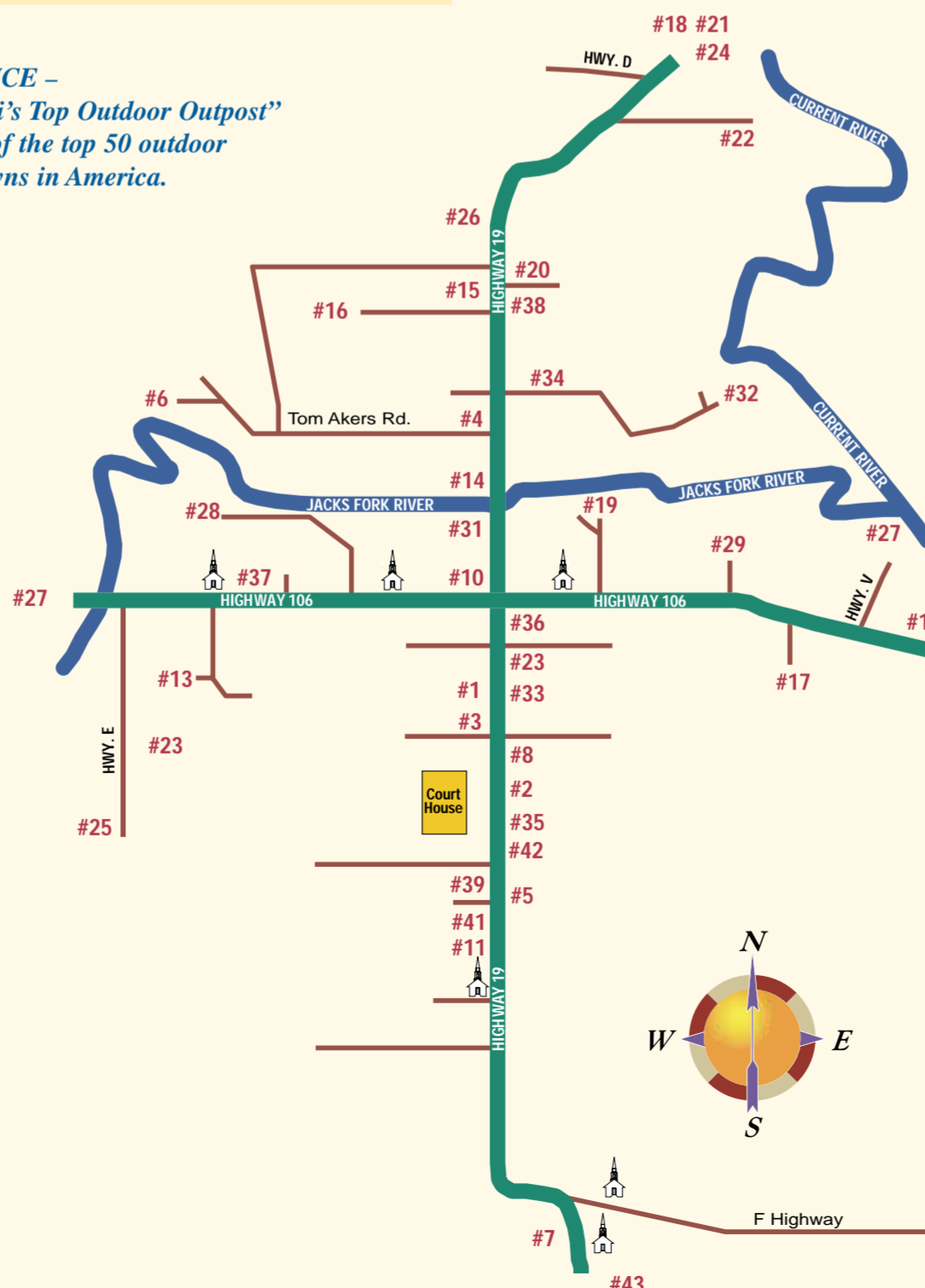
Recreation continued

- 26 Eminence Canoes, Cottages & Camp** – Vacation/getaway packages include FREE canoes, tubes, kayaks, golf, breakfast and nights. Family reunions and romantic twosomes. RV and tent sites with modern restrooms and FREE hot showers. www.missouri2000.net/eccc. 800-723-1387.
- 27 Harvey's Alley Spring Canoe Rental** – 1-888-963-5628 or 573-226-3386. At Alley Spring Park. **Two Rivers Canoe Rental** – 1-888-833-4931 or 573-226-3478. Junction Current and Jacks Fork Rivers. Canoe and kayak rentals, car shuttles, groceries and supplies.
- 28 Harvey's Circle B Campground** – Riverfront cabins. 7 unit motel, RV hookups, camping, store and game room. Seasonal, open April thru September. 573-226-3618.
- 29 Jacks Fork Canoe Rental & Campground** – Canoes, campsites, electric and sewer hookups, showers, restrooms, tables and grills, fun tubes. Highway 19 east of Eminence. Across river from Cross Country Trail Rides. 800-522-5736.
- 30 Ozark National Scenic Riverways** – Park includes the Jacks Fork and Current Rivers. Book and gift sales at Alley Mill and Van Buren, available through Eastern National. 573-323-4236.
- 31 Windy's Canoe & Tube Rental** – Jacks Fork and Current Rivers. Canoes, kayaks, tubes, private shuttles, weekday and group rates. Shuttle to and from local lodging and campsite. Highway 19 south of Jacks Fork Bridge. 573-226-3404. www.windyscanoe.com

Shopping

- 32 Cross Country Trail Ride Western Store** – Located inside CCTR Arena. Carrying Rocky Mountain, Wrangler, Justin and many other brands. Monday-Friday 8 am to 4 pm except during a scheduled event. 573-226-3883 or www.cctrwesternstore.com
- 33 Eminence Lumber & Supply / Spurgin Construction Co.** – Dave and Dennis Spurgin, owners, PO Box 147, Eminence, MO 65466. 573-226-5514; 573-226-3626.

EMINENCE – "Missouri's Top Outdoor Outpost" and one of the top 50 outdoor sports towns in America.



Shopping continued

- 34 Shannon's Palette** – Paintings and prints of Ozarks scenes, so'west, country and Victorian crafts, cards, gifts, baskets, portraits from photos. North 19 at Stewart's Landing. 573-226-5655. hilma@socket.net or www.shannonspalette.com
- 35 TJ's Clothesline-N-More** – Clothing, swimwear, tanning bed and lotions, CB's and accessories, U.S. Cellular cell phones and accessories. Phone 573-226-3510. Email mjhnsnmarie@netscape.net
- 36 The Waterin' Hole** – Junction 19 & 106, Eminence, MO 65466. Phone 573-226-3767. Let us be your one stop shop for summer fun...beer, wine, liquor and a whole lot more!

Services

- 37 Brewer's Ice Company** – Family owned and operated since 1979. Wholesale ice: cube and block. We deliver and furnish the box. Phone 573-226-5564. Email: mrstice5564@yahoo.com
- 38 Community Bank N.A.** – Summersville and Eminence locations. A full service bank with ATM/Check Card, free checking, Safety Deposit boxes, Drive-up window, Time Deposits, Savings Accounts, and Consumer loans. Member FDIC/Equal Housing Lender. 573-226-5200.
- 39 Eminence Security Bank** – "Come see us for all your banking needs. We're a home owned independent bank." FDIC insured. Equal Housing Lender.
- 40 Missouri Wild Horse League** – PO Box 301, Eminence, MO 65466. 573-226-3492. Protecting and maintaining the wild horses of Shannon County. For directions to view the horses call the number above. Membership \$5.00 per person annually.
- 41 Shannon County Family Clinic** – In Eminence is open weekdays. Our phone number is 573-226-5505. Philma Opinaldo, MD and Kay Swenson, FNP are our providers. SCFC accepts Medicare, Medicaid and other insurances, and utilizes a sliding scale based on income.
- 42 The Shiatsu Center LLC** – Therapeutic massage. Enjoy the healing art and science of Shiatsu today for pain relief, health, and general well-being. Licensed. 11 years experience. By appointment Tues.-Sat. 12-7 pm. 573-226-5248, 102 North Main Street.
- 43 St. John's Eminence Medical Clinic** – Family practice, Dale E. Haverstick, MD; Jon W. Roberts, DO; Mike Gaddy, PA-C. 573-226-5401.
- 44 United Country/Riverways Realty, Inc.** – Provides real estate services in a 7 county region in south central Missouri from offices in Mountain View and Willow Springs, MO. Professional computerized MLS service with country attitude! 1-800-474-8379.

Churches

- Assembly of God** – Services 10:50 a.m. 573-226-5435.
- Christian Church** – Services 9:30 a.m. 573-226-3778.
- Church of God of Prophecy** – Services 11:00 a.m. 573-226-3997.
- Fellowship Tabernacle** – Services 11:00 a.m. 573-226-5581.
- First Baptist Church** – Services 11:00 a.m. 573-226-3718.
- St. Sylvester Catholic Church** – Mass 8:00 a.m.
- United Methodist Church** – Services 11:00 a.m. 573-226-3326.

Other Listings of Interest

- Eminence Area Arts Council** – 573-226-5655
- Missouri Department of Conservation** 573-226-3616
- Missouri Wild Horse League** – 573-226-3492
- Ozark National Scenic Riverways** – 573-226-3945
- Roy L. Beck Municipal Golf Course** 573-226-3018
- Scenic Riverways Arts & Crafts Association** 573-226-3356
- Shannon County Museum Association** 573-226-5655
- Eminence City Office** – 573-226-3717
- Shannon County Sheriff's Dept.** – 573-226-3615

Eminence bursts with life as summertime warms the Ozark mountains. Long days are packed with activities centered in the great outdoors. Hiking, fishing, biking, golfing, camping, canoeing and more will round out an Eminence vacation. Warm days, cool evenings and small-town charm make Eminence the ideal environment to enjoy the Ozark mountain lifestyle. Complete your vacation with rounds on the golf course, music festivals among the trees, daily wildlife hikes and romance under the stars. Immerse yourself in solitude while exploring the rivers and forests of the Ozark mountains. Bike down mountain trails or follow gentle paths that meander throughout the national forest. Eminence is the perfect destination for year-round fun.



Stay a day or a lifetime in Shannon County.

Community Calendar of Events

- APRIL**
 - Bluegrass Festival
 - Cat & Dog Scramble Golf Tournament
 - Easter Egg Hunt
- MAY**
 - Ozarks Days
 - 3-Person Scramble Roy Beck Golf Tournament
 - Cross Country Trail Ride
 - Eminence Area Arts Council Art Show
- JUNE**
 - Cross Country Trail Ride
- JULY**
 - Alley Remembers at Alley Mill ONSR
 - Cross Country Trail Ride
- AUGUST**
 - Cross Country Trail Ride
 - Concert at Alley Spring ONSR
- SEPTEMBER**
 - Labor Day Roy Beck Golf Tournament
 - 10th Annual Quilt Show EAAC
- OCTOBER**
 - Haunting of the Hills ONSR
 - Fall Finale Golf Tournament
 - Cross Country Trail Ride
 - 35th Riverways Arts & Crafts Show
 - Halloween Contest
- NOVEMBER**
 - Cross Country Trail Ride
 - Miss Eminence Pageant
- DECEMBER**
 - Holiday Open House
 - Evening Christmas Parade